

DRIVE Version 3

Client Installation

relate
software

CONTENTS

Contents..... 1

Copyright..... 2

Download 3

 Install..... 3

 DRIVE Latest Update 4

 Cannot Connect To Database 5

COPYRIGHT

This document is protected under copyright law and may not be reproduced in any format whatsoever without the prior written consent of Relate Software Development Limited. Failure to comply with this condition may result in prosecution. The program and documentation are protected under copyright law and the program is licensed for use by the user who has completed the Software Registration agreement. The program is licensed under the conditions referred to in the Software License Agreement.

Relate Software does not warrant that the software package will function properly in every hardware/software environment. The software may encounter problems working in combination with modified versions of the operating system, with certain print-spooling or file facility programs, or with certain printers supplied by independent manufacturers.

Rigorous testing of the software is carried out by Relate Software and all documentation and help files are reviewed, however Relate Software makes no warranty or representation, either express or implied, with respect to this software or documentation, their quality, performance, merchantability, or fitness for a particular purpose.

The software and documentation are licensed 'as is', and the licensee, by making use of the system, assumes the entire risk as to their quality and performance.

Relate Software will not be liable for direct, indirect, special, incidental, or consequential damages arising out of the use or inability to use the software or documentation, even if advised of the possibility of such damages. In particular, and without prejudice to the generality of the foregoing, Relate Software will not incur any liability for any programs or data stored. Relate Software will not incur any costs of recovering such programs or lost data for whatever reason.

We reserve the right to alter, modify, correct and upgrade our software and documentation without notice.

In no event shall Relate Software be liable for any special, indirect, or consequential damages whatsoever resulting from loss of use, data or profits, whether in action of contract, negligence or other action arising out of or in connection with the use or performance of the supplied accounts templates, software, documentation or information available on its websites.

© 2018 Relate Software
All Worldwide Rights Reserved

DOWNLOAD

To install DRIVE on a local machine you need to download the following files from the Relate Software website;

1. DRIVE Version 3.0 (DRIVEV3Install.zip)
2. DRIVE Latest Update (DRIVEV3UPD.EXE)

These file are available to download from the Relate Software website (www.relate-software.com > Support > DRIVE > Downloads).

NOTE: You will need to have a sign-in/login for the support area of the website.

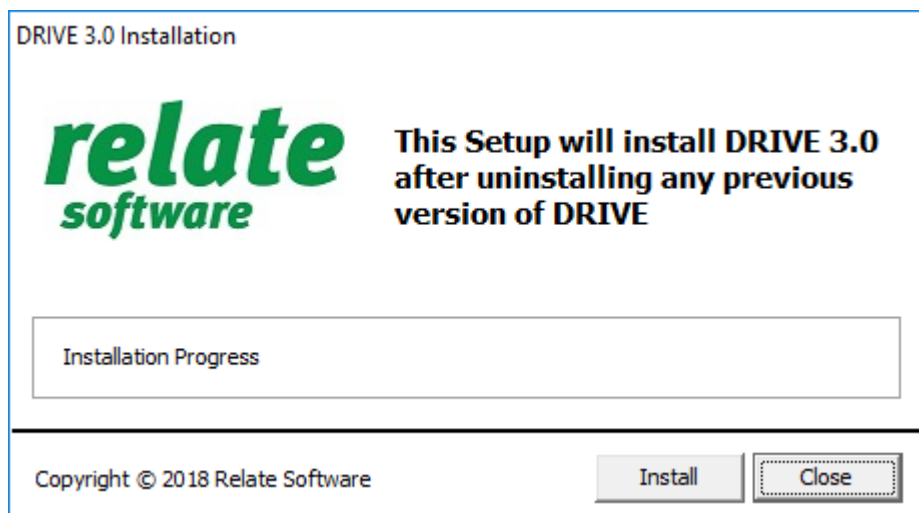
Save these files to your desktop or to a shared network location.

INSTALL

Once downloaded you will see a 'DRIVEV3Install.zip' file, you will need to extract all of the files. Once extracted you will see the following folders;

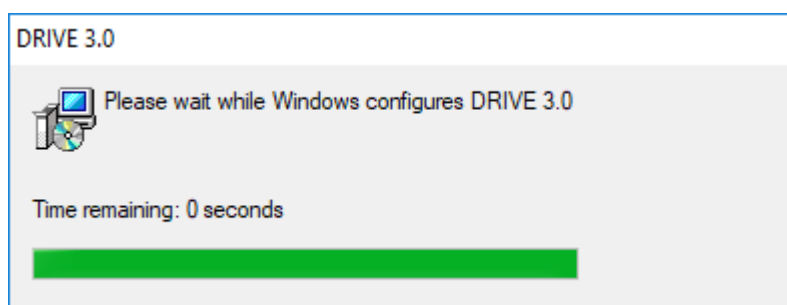
- VC2005
- DRIVE3Setup
- Framework
- WindowsInstaller

Double click the DRIVE3Install.exe, the following screen will appear

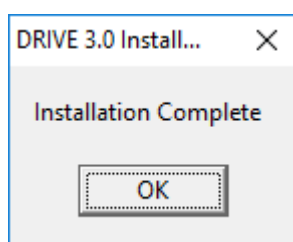


NOTE: If you have previous versions of DRIVE installed these will be uninstalled first.


Click the 'Install' icon to commence the installation, the following screen will appear



When the install is finished you will get the following message



DRIVE is now installed on your PC.

The DRIVE  icon will now be available on your desktop. Before running this you will need to update to the latest version of DRIVE (see section on 'DRIVE Latest Update').

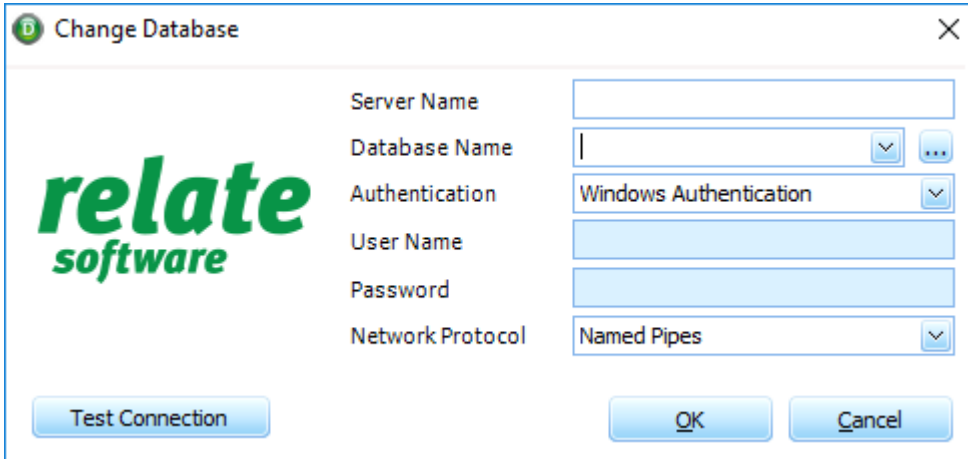
DRIVE LATEST UPDATE

Once you have completed the installation of the DRIVE you will need to run the update file to bring it up to the latest version. You can download this from the Relate Software website as discussed earlier in this document.

Once you have downloaded the DRIVE Update file it will appear as 'DRIVEV3Silent.exe'. To run this file, simply double click on it. The update will run in the background to completion.

CANNOT CONNECT TO DATABASE

To login into DRIVE double click the DRIVE icon  on your desktop. The 'Change Database' window will be displayed when you first try to connect.



The 'Change Database' dialog box features the Relate Software logo on the left. It contains the following fields and controls:

Server Name	<input type="text"/>
Database Name	<input type="text"/> <input type="button" value="v"/> <input type="button" value="..."/>
Authentication	<input type="text" value="Windows Authentication"/> <input type="button" value="v"/>
User Name	<input type="text"/>
Password	<input type="password"/>
Network Protocol	<input type="text" value="Named Pipes"/> <input type="button" value="v"/>

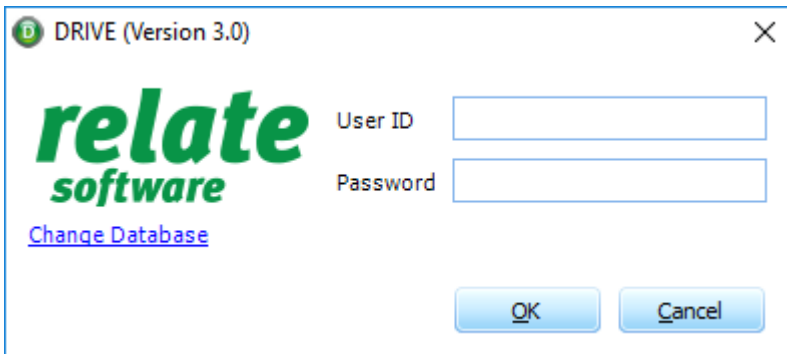
Buttons: Test Connection, OK, Cancel

To connect to DRIVE you will need to know the following information;

- Server Name
- Database Name

If you do not know this information you can get it by going to another machine that is currently working. Login into DRIVE and go to Tools > Change Database. You will see the same screen but with the correct information. Take note of the Server name and Database name, and then key this information into the machine with the new install.

Once you have input the correct information select the OK button. The login screen below will be displayed.



The 'DRIVE (Version 3.0)' dialog box features the Relate Software logo on the left. It contains the following fields and controls:

User ID	<input type="text"/>
Password	<input type="password"/>

Buttons: OK, Cancel

[Change Database](#)